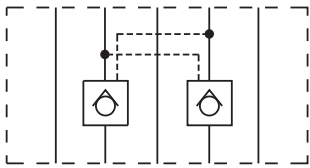


KRACHT



Pilot operated check valve
VJR2-10/M

Pilot operated check valve VJR2-10/M



- Pilot operated check valves for use in sticking assemblies
- 3 models
 - double valve with check valves in lines A and B

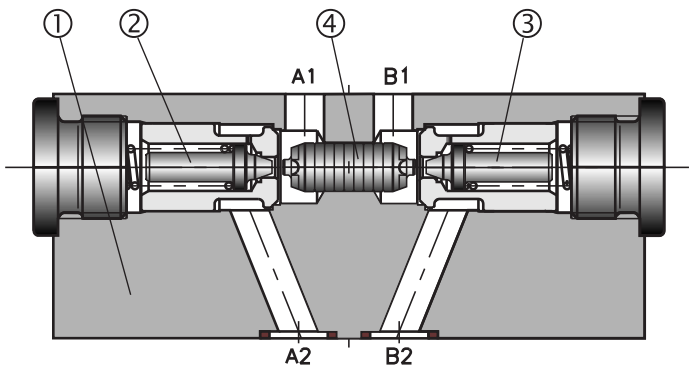
- single valve with check valves in line A
- single valve with check valves in line B

- Installation dimensions to ISO 4401-05-04-0-94 and DIN 24 340-A10

Konstruktionsbeschreibung

A pilot operated check valve closes tightly the hydraulic circuit between the valve and the actuator. The valve basically consists of the housing (1), one or two check valves (2), (3) and the pilot piston (4). The main poppets of the check valves are provided with pilot poppets (5) which enable opening the check valve under pressure. When fluid flows from A1 to A2 it opens the check valve (2) and at the same time shifts the Pilot piston (4) which wich opend by means of the pilot poppet (5) the check valve (3). When the pressure in chammels A1 and B1 drops, the springs pusch the poppets onto the seats and the circuit

between the check valve and the actuator is closed under pressure. To ensure that the check valves close tightly, a directional valve with functional symbol Y is to be used, which connects in its middle position the ports A1 and B1 with tank T (see typical circuit diagram). The basic surface treatment of the valve housing (1) is phosphate coated, whereas the other parts are zinc coated.



Ordering Code

EXAMPLE **VJR2 - 10 / M** . . .

Pilot operated check valve	Norminal size	Modular design	Sealing no design. Standard (NBR) V Viton (FPM)
----------------------------	---------------	----------------	---

Functional symbols

A
valve in line A

B
valve in line B

C
valves in lin A and B

① valve-side ② subplate-side

Typical circuit

Technical Data

Nominal size: 10 mm
 Maximum flow rate: 100 l/min / 26.42 US gpm
 Max. operating pressure: 320 bar / 4641 psi
 Cracking pressure: 2 bar / 29 psi
 Hydraulic fluid: Hydraulic fluid of power classes HM, HV to CETOP PR 91 H in viscosity classes ISO VG 32, 46 and 68.

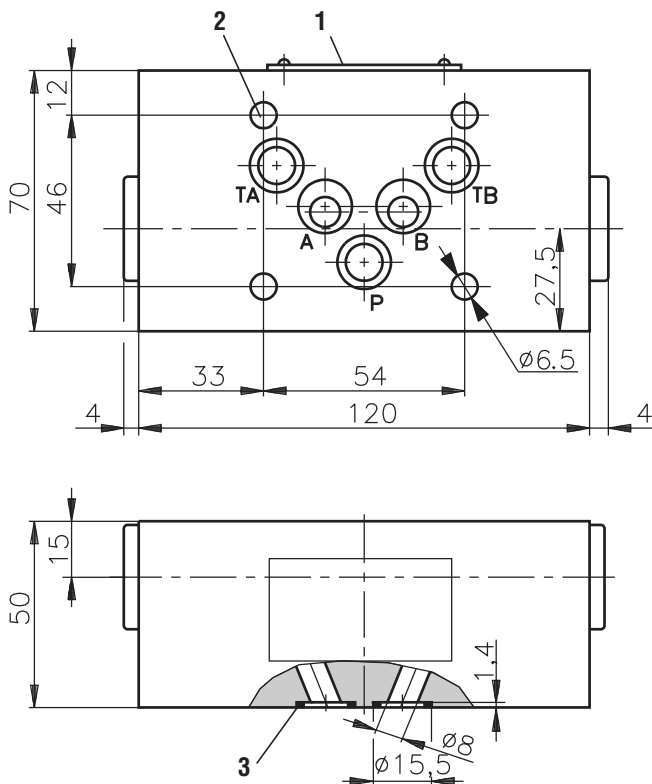
Fluid temperature range for standard sealing (NBR) -30... +80 ° C / -22... +176 ° F
 Viscosity range 10... 400 mm²/s⁻¹

Maximum degree of fluid contamination: Class 18/15 according to ISO 4406. Therefore we recommend a filter with a retention rate $\beta_{10} \geq 75$.

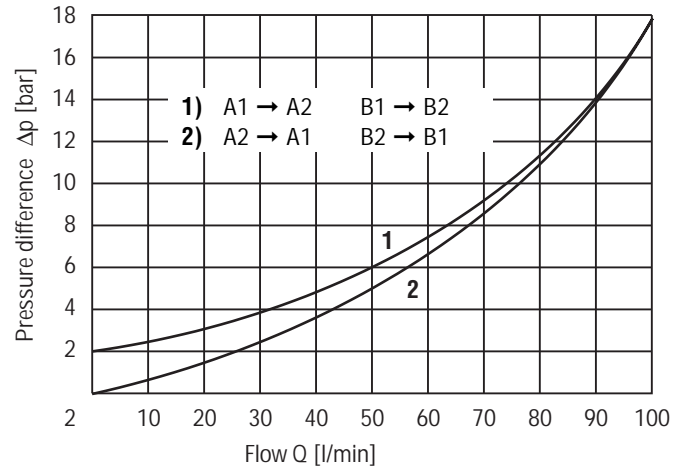
Area ratio (pilot piston/ check valve seat): 5,6 : 1

Weight: 3 kg / 6.61 lb

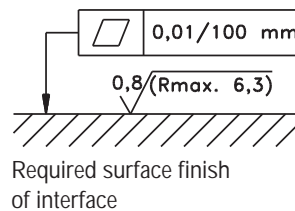
Valve Dimensions in mm (in brackets)



Δp -Q Characteristic Measured at $v = 35 \text{ mm}^2/\text{s}$ and $t = 40 \text{ }^\circ\text{C}$



- 1 Name plate
- 2 4 through mounting holes
- 3 Sealing rings (5 pcs) supplied in each valve
Standard (NBR) Square ring 12,42 x 1,68
Viton (FPM) Square ring 12,42 x 1,78



Caution!

The packing foil is recyclable. The protecting plate can be returned to the manufacturer. Tightening torque of the screws is 11.13 lb.ft (15 Nm). The technical information regarding the product presented in this catalogue is for descriptive purpose only. It should not be construed in any case as a guaranteed representation of the product properties in the sense of the law.

Overview of
our complete
programm

Transfer pumps

Transfer pumps for lubricating oil supply equipment, low pressure filling and feed systems, dosing and mixing systems, including PUR

Volutronic®

Gear flow meters and electronics for volume and flow metering technology in hydraulics, processing and laquering technology

Mobile hydraulics

Single and multistage high pressure gear pumps, Hydraulik motors and valves for construction machinery, vehicle-mounted machines

Industrial hydraulics

Cetop directional control and proportional valves, hydraulic zylinders, pressure, quantity and stop valves for pipe and slab construction, hydraulic accessories for

With our decades of experience, we are at your side, world-wide, for the professional mastery of specific applications and complete solutions in hydraulic and process technology



VJR2-10/M.uk.01.01